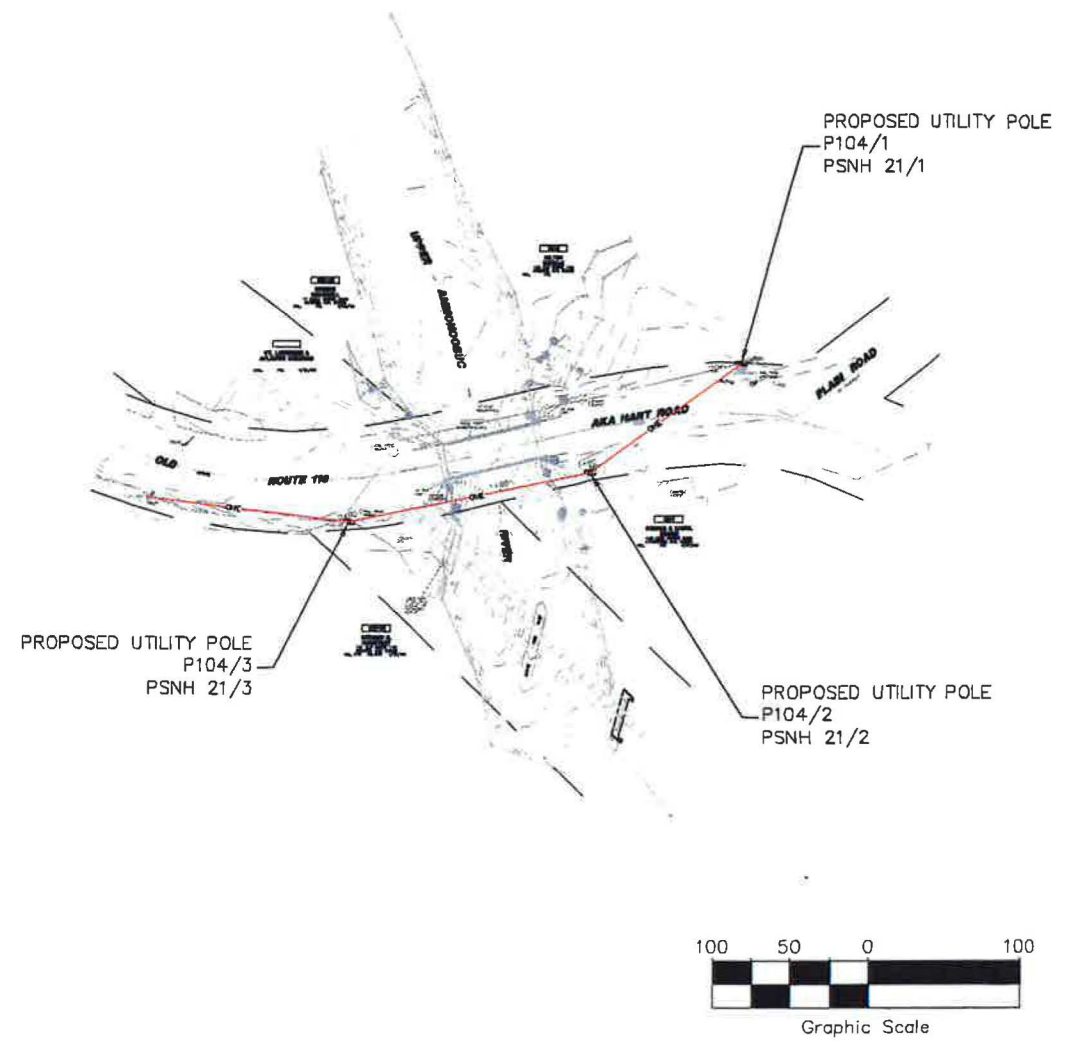


STATION	ELEVATION
0+00	987.6
1+00	988.0
1+60	986.3

NOTES

1. MINIMUM AND MAXIMUM SAG CALCULATIONS PROVIDED BY EVERSOURCE ENERGY



REV.	DATE	DESCRIPTION	DR	CK

EXHIBIT 1

Civil Engineers
Structural Engineers
Traffic Engineers
Land Surveyors
Landscape Architects
Scientists

48 Constitution Drive
Bedford, NH 03110
Phone (603) 472-4488
Fax (603) 472-8747
www.tfmoran.com

UPPER AMMONOOSUC RIVER LINE CROSSING

PLAN AND PROFILE

25W1 LINE

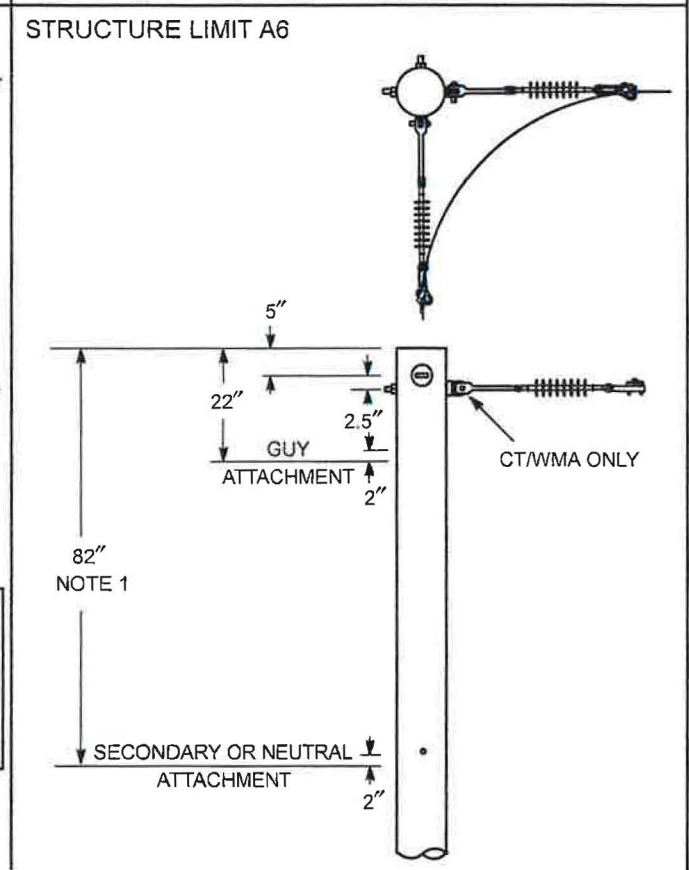
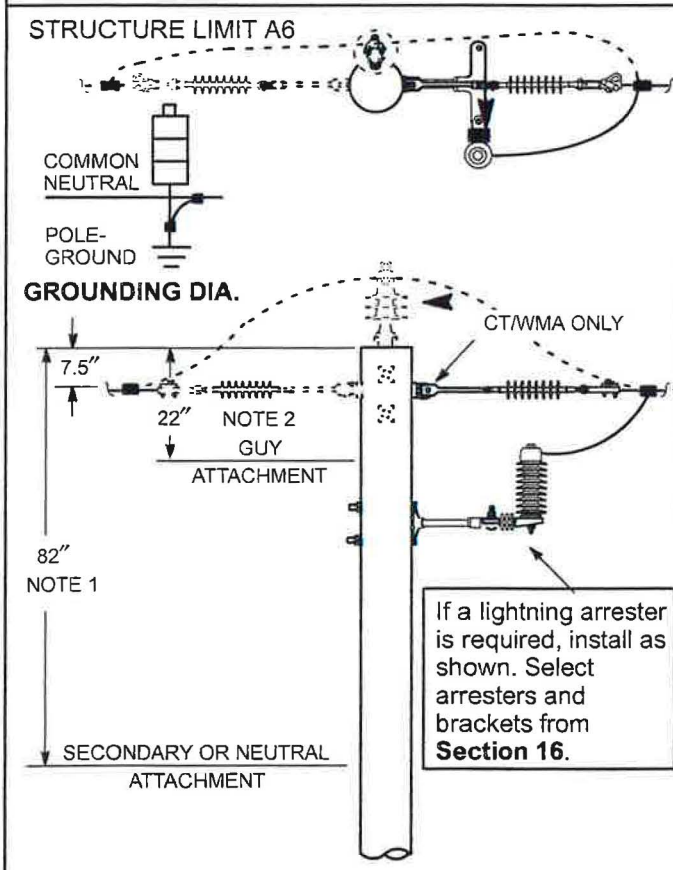
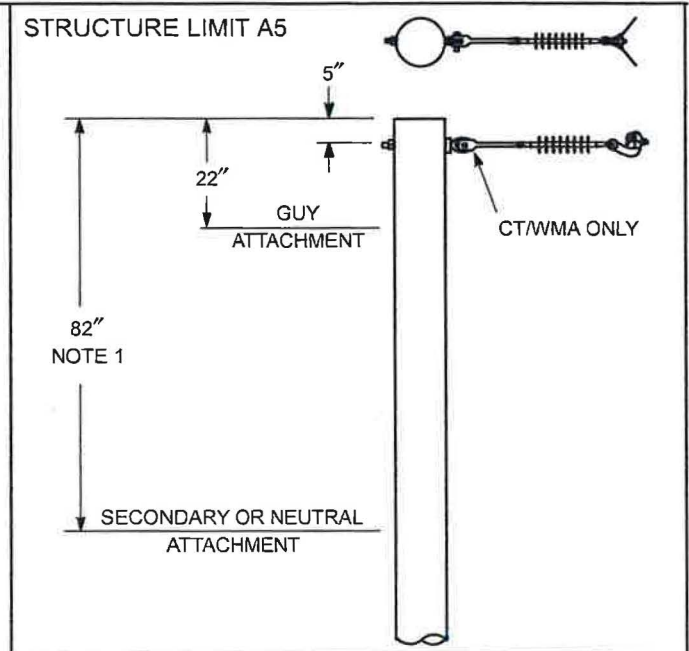
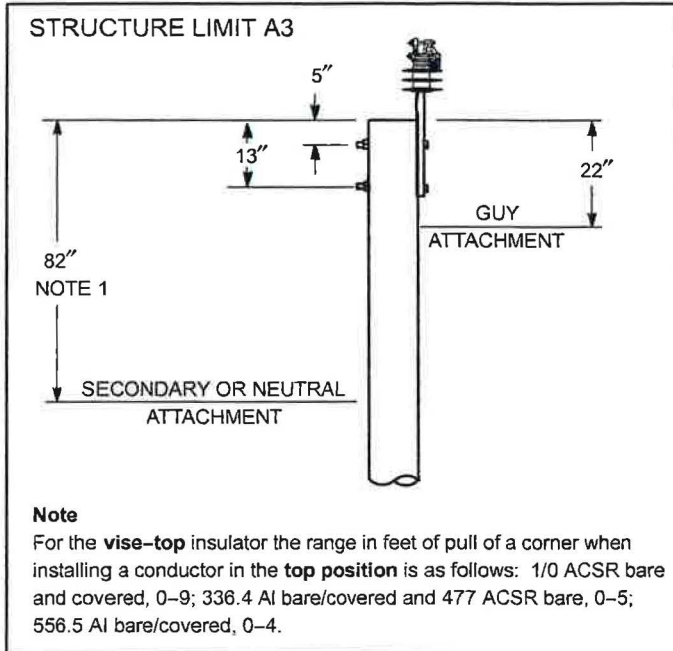
PREPARED FOR
EVSOURCE ENERGY

FILE	95799.00	SCALE: 1"=100'	4/19/17
	DR JB CK NG CADFILE	95799-00 SITE.DWG	

Copyright 2017 © Thomas F. Moran, Inc.
48 Constitution Drive, Bedford, N.H. 03110

All rights reserved. These plans and materials may not be copied, duplicated, replicated or otherwise reproduced in any form whatsoever without the prior written permission of Thomas F. Moran, Inc.

This plan is not effective unless signed by a duly authorized officer of Thomas F. Moran, Inc.

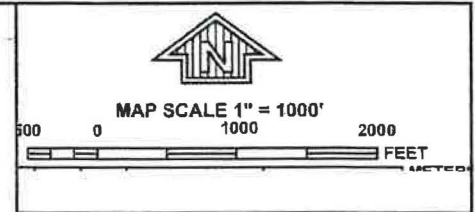
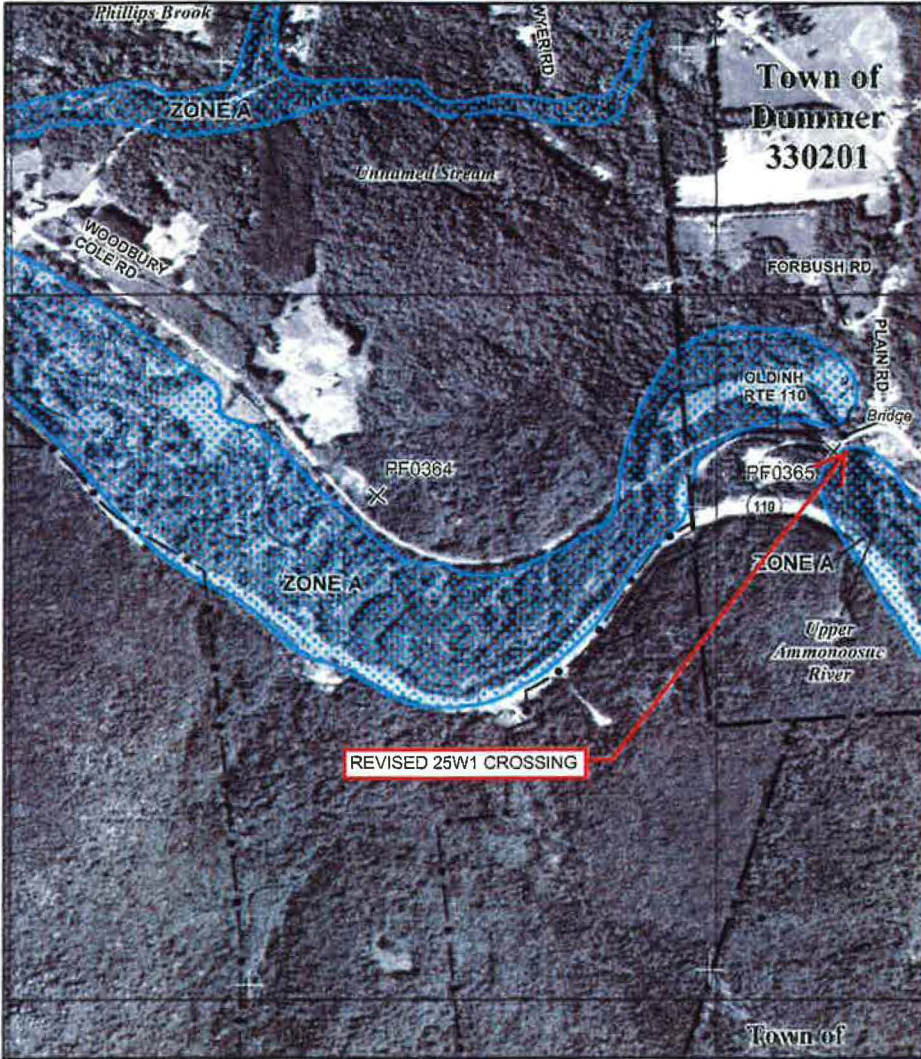


Notes

1. Refer to **DTR 04.047** for secondary and neutral attachment heights.
2. Install double deadends with a pole-top pin for single-phase extensions with a change in wire size.
3. Select straight strain clamps from **Section 07**.

ORIGINAL	35 KV MGY AND BELOW - ARMLESS CONSTRUCTION SINGLE-PHASE - TANGENT THROUGH DEAD-END			
5/24/89				
APPROVED				
07/10/15	EVERSOURCE ENERGY	CONSTRUCTION STANDARD	DTR 10.027	6

EXHIBT 3



NFP

PANEL 0780D

FIRM
FLOOD INSURANCE RATE MAP
COOS COUNTY,
NEW HAMPSHIRE
(ALL JURISDICTIONS)

PANEL 780 OF 1300
 (SEE MAP INDEX FOR FIRM PANEL LAYOUT)

CONTAINS:

COMMUNITY	NUMBER	PANEL	SUFFIX
COOS COUNTY	330171	0780	D
DUMMER, TOWN OF	330201	0780	D
JULIAN, TOWN OF	330333	0780	D
STARK, TOWN OF	330603	0780	D

Notice to User: The **Map Number** shown below should be used when placing map orders; the **Community Number** shown above should be used on insurance applications for the subject community.

MAP NUMBER
 33007C0780D

EFFECTIVE DATE
 FEBRUARY 20, 2013

Federal Emergency Management Agency

This is an official copy of a portion of the above referenced flood map. It was extracted using F-MIT On-Line. This map does not reflect changes or amendments which may have been made subsequent to the date on the title block. For the latest product information about National Flood Insurance Program flood maps check the FEMA Flood Map Store at www.msc.fema.gov

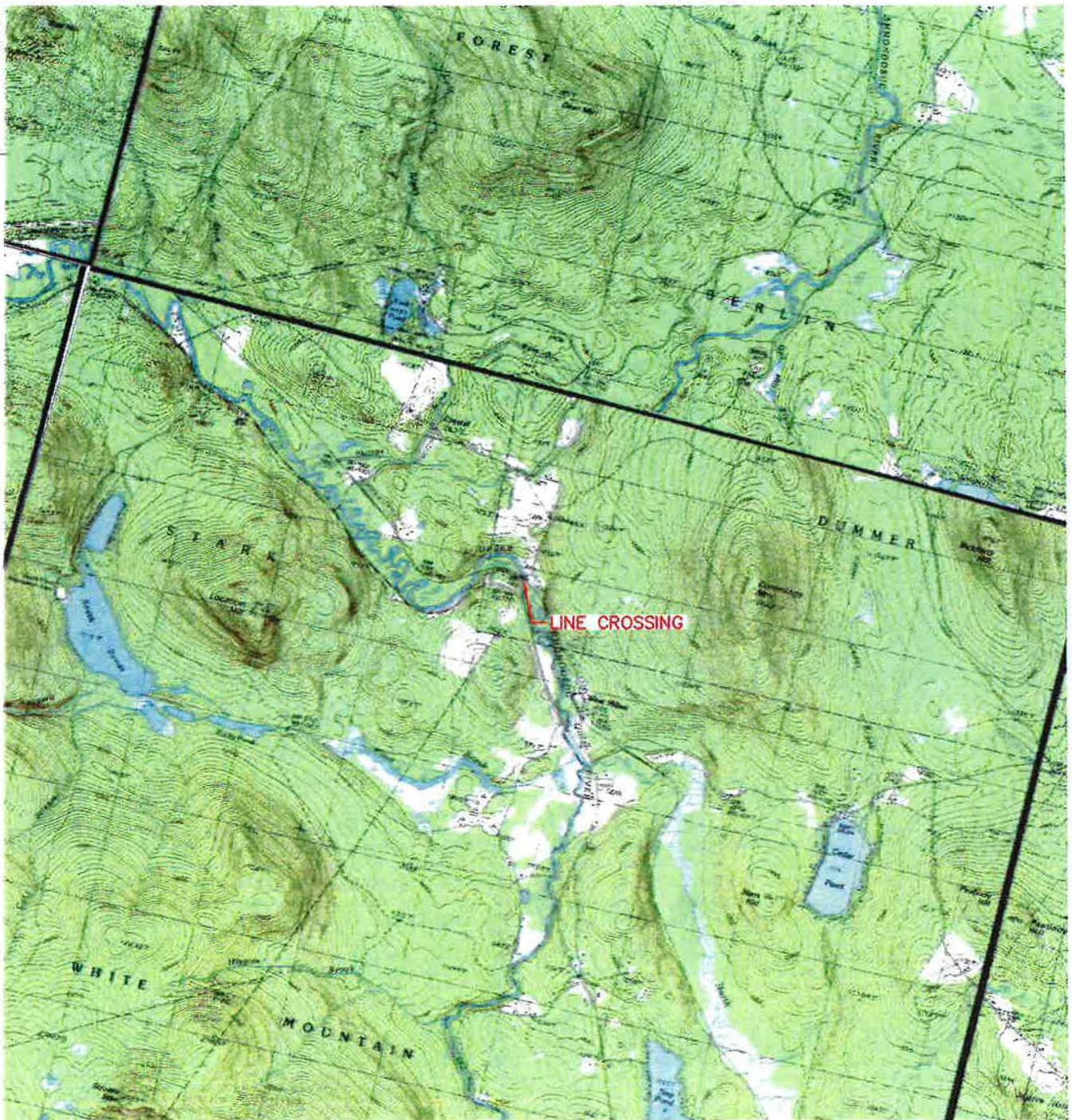


EXHIBIT 4



Civil Engineers
 Structural Engineers
 Traffic Engineers
 Land Surveyors
 Landscape Architects
 Scientists

48 Constitution Drive
 Bedford, NH 03110
 Phone (603) 472-4488
 Fax (603) 472-9747
 www.tfmoran.com

UPPER AMMONOOSUC
 RIVER CROSSING

**USGS LOCUS MAP
 25W1 LINE**

*PREPARED FOR
 EVERSOURCE ENERGY*

<small>MR-n</small> 95799-00	SCALE: 1"=2,000'	3/2/17
	<small>DR JB CK NG CADFILE</small>	95799-00 Site.DWG